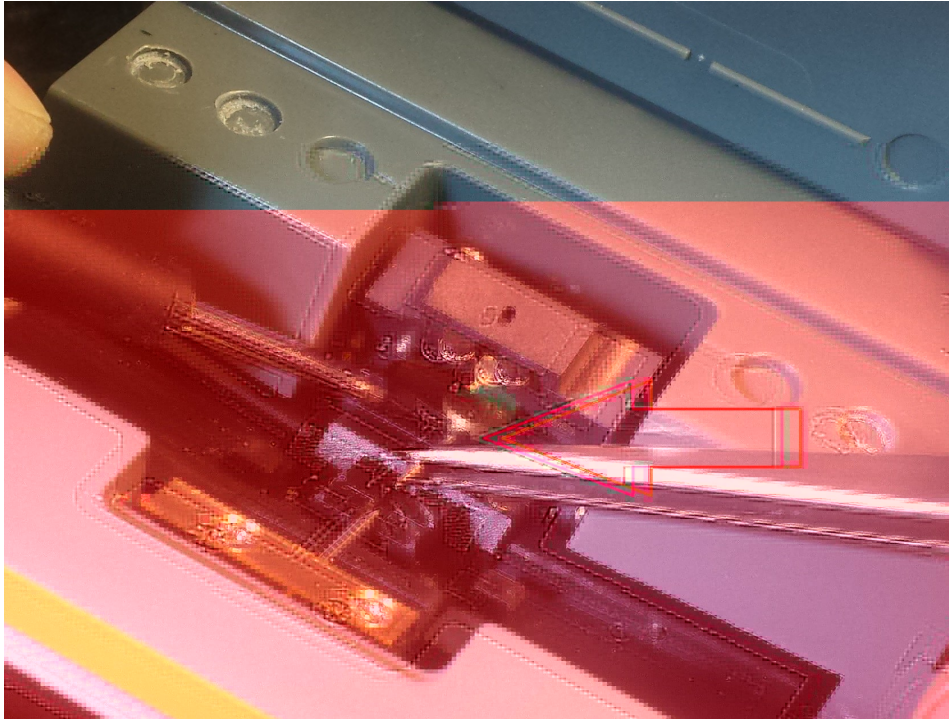


# Change the electrodes on EasySplicer



## STEP 1.

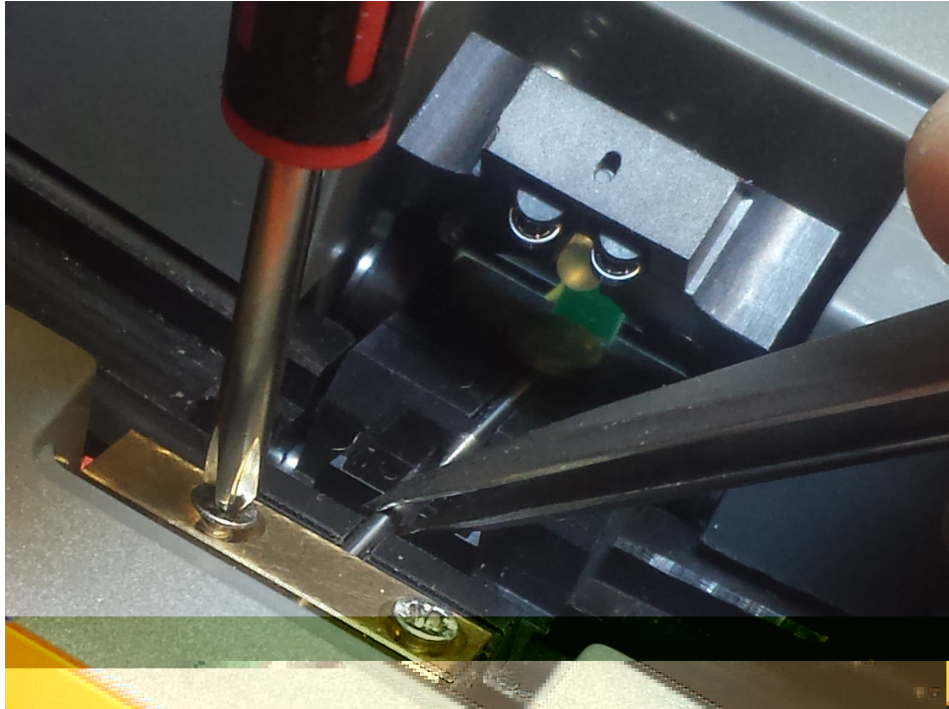


### **Upper electrode.**

Use a small flat screwdriver to lift the electrode lock (the circular brass part).

While lifted use a pincer to carefully remove the old electrode. **No strength is required, be careful.**

Keep the lock lifted with the screwdriver and insert the new electrode.



### **Lower electrode.**

Loosen the two screws to loosen the electrode lock.  
Replace the electrode with a pincer.

### **STEP 2.**

Adjust the position of both electrodes so that they are just outside the camera view (make them viewable in the display and gently push them out of the picture). **No strength is required, be careful.**

Carefully tighten the two screws to lock the electrode in position.

**CAUTION ! DO NOT TIGHTEN TOO HARD. Just enough to lock the electrode in place.**

**Done !!!**